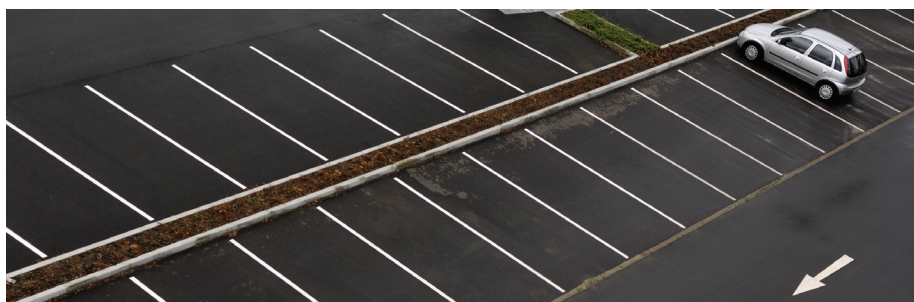


Roadmarker Roadmarker Reflective

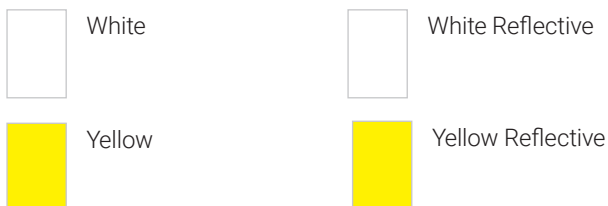
A quick drying, thick marking paint



Watco Roadmarker is a versatile and quick drying line marking paint based on chlorinated rubber resin which can be applied as low as 0°C. It is showerproof in 1 hour and will accept pedestrian traffic in only 4 hours at 10°C. Watco Roadmarker can be used on bare concrete, asphalt or painted floors and may also be used on aged blacktop, thermoplastic coverings, and most types of painted lines and floor paints. For a more clearly visible marking, specify Roadmarker Reflective which has a surface coated with fine glass beads. Light reflects from the back of each bead to give a brighter appearance. The glass beads are extremely hardwearing and also give the surface greater slip resistance.



Colours



Samples are available on request.

While great care is taken with the colour samples shown, no guarantee can be given that they represent exactly the colours offered.

Areas of use:

- Private roads
- Car parks
- Industrial floors
- School playgrounds

Features:

- Ideal for heavily trafficked areas
- Quick drying - even at low temperatures
- Will tolerate a slightly damp substrate
- Apply with roller or brush
- Suitable for external areas or well-ventilated internal spaces

Need help? Speak to the experts

Our dedicated and professional team are here to help you get the best results for your project.

They will talk you through the preparation and application stages when using **Roadmarker and Roadmarker Reflective.**

Call our expert team on: **01483 418 418** (Weekdays 8:00am - 5:30pm. Saturday 9:00am - 12:00pm)



Roadmarker

Roadmarker Reflective

A quick drying, thick marking paint

1 Surface Preparation

Ensure surfaces are clean, dry and free from any loose material. Remove any contamination, including dirt, oil, laitance and light to medium grease with Watco Bio-D, or for thick deposits of grease use Watco Concroff[®].

2 Application

No need to stir. Apply by roller or brush. Make sure the lid is not left off the product for any length of time to prevent it drying out. Roadmarker is solvent based and is therefore recommended for outside use. If using inside, ensure it is a well ventilated area, such as a loading bay, with doors opening directly to the outside. Roadmarker Reflective – The lid of the tin of beads is perforated and sealed with a batch label (this can be seen clearly from the underside of the lid). Pierce the label to open a few of the holes and sprinkle beads evenly on to freshly applied Roadmarker. When dry, sweep away and dispose of the excess glass beads.

3 Safety

Keep container in a well-ventilated place. Keep away from sources of ignition – No smoking. Avoid contact with skin. Wear suitable protective clothing and gloves. Only for use externally or in very well-ventilated internal areas. Roadmarker Reflective – The Clear Anti Slip Glass Beads are a fine, light, powder. Do not breathe or ingest dust. Wash hands thoroughly after use.

The material and its container must be disposed of as hazardous waste. Material Safety Data Sheets are available.

4 Ordering

Available direct from Watco UK Limited and through agents worldwide. All Watco products are sold subject to the Company's Standard Conditions of Sale.

The Company and its representatives are often asked to comment on potential uses of Watco products which differ from those described in the Company's data sheets. Whilst in such cases the Company and its representatives will always try to offer helpful and constructive advice, the Company cannot be held responsible for the results of such uses unless they are specifically confirmed in writing by Watco.

Roadmarker Roadmarker Reflective

A quick drying, thick marking paint

Specification

Composition	Chlorinated rubber resin.
Number of Components	Roadmarker: 1 Roadmarker Reflective: 2
Usage Interior/ Exterior	Exterior only.
Application Tools	Medium Pile Roller and brush.
Suitable For	Bare concrete, asphalt, painted floors, aged blacktop, thermoplastic coverings and most types of painted lines and floor paints.
Pack Size	5L, plus 600g of clear glass beads with Roadmarker Reflective.
Coverage	5 litres will produce approximately 250 - 300 metres of 50mm wide lines (12m ² - 15m ² per pack). Application of the clear glass beads will generally increase line marking thickness by 250 - 400 microns.
Cleaning	No special requirements. Keep clean with the occasional sweep.
Cleaning Tools	Use a thinner and cleaner based on a xylene solvent such as Watco TH99 Cleaning Solvent.
Shelf Life	24 months in unopened containers.
Storage	Highly flammable. Flash point below 21°C. Store in a cool, dry and well ventilated space. Do not allow to freeze.
Safety	All product labels provide general safety information. Material Safety Data Sheets are available. Food products must be removed from the area during application and cure.
Principle Limitations	Contains xylene and is not recommended for use on newly applied Watco Flowtop or similar polymer reinforced screeds. If in doubt, apply to a small test area. Test before using Watco Roadmarker on painted floors. Do not apply too thickly to avoid waste and to avoid a line that is too thick or uneven. Do not apply in a high wind. Any glass beads that are not able to adhere to the Roadmarker will be quickly swept away, so ensure they settle down into the Roadmarker surface.

Drying time

Drying times will be shortened by higher temperatures and lengthened by lower temperatures.

	Shower Proof	Touch Dry	Walk on
0°C	-	-	8 hours
10°C	1 hour	40 minutes	4 hours
20°C	30 minutes	90 minutes	2 hours