

CONCREX® FLEX

Impact and crack resistant floor repairs



AREAS OF USE

- For floors subject to vibration, movement or impact

FEATURES

- Virtually indestructible epoxy resin floor repairs
- Exceptional impact and wear resistance
- Resistant to vibration
- May be feather edged
- Fast curing
- Chemical resistant and anti-slip
- Use internally or externally – it will not be damaged by frost
- Impermeable and non-dusting
- Can be painted if required

DESCRIPTION

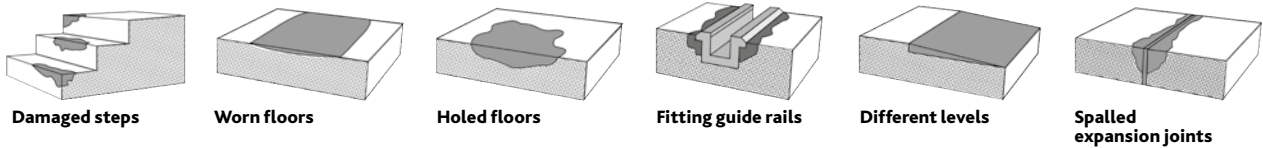
Watco Concrex® Flex has been specially formulated to resist cracking in areas where floors may be subject to movement, vibration, flexing or impact.

The two-part epoxy resin mortar has outstanding strength and durability and is modified with an epoxy resin blend that offers a degree of flexibility. This means that it is far less likely to crack or break under impact than a conventional floor repair mortar.

Watco Concrex® Flex also has excellent chemical resistance and cures quickly to allow the floor to be put back into use.

Heavy duty thin section floor repairs are so strong that they can be feather-edged.

WHERE TO USE WATCO CONCREX® FLEX



SPECIFICATION

| | | | |
|--------------------------|--|-----------------------|---|
| Composition | A finely graded sand pre-blended with epoxy resin. | Curing Time | Normally 3 - 6 hours depending on temperature. Curing time will be extended by low temperatures. Curing will be very slow or even arrested by temperatures at 10°C and below. |
| Colour | Mid grey. | Cleaning Tools | Equipment used for mixing and applying should be wiped clean with white spirit or a similar solvent before the Concrex® Flex cures. |
| Primer Required | Not usually – see section headed 'Priming'. | Shelf Life | 12 months in unopened container. |
| Usage Interior/ Exterior | Interior & exterior. | Storage | Store at a temperature between 10°C and 30°C. Do not allow to freeze. |
| Working Life | 30-60 minutes depending on temperature. If Concrex® Flex is used past its working life, trowelling will become difficult and adhesion will be reduced. | Safety. | All product labels provide general safety information. Material Safety Data Sheets are available. Food products must be removed from the area during application and cure. |
| Application Tools | Steel float or trowel. | Chemical Resistance | Resistant to spillages of many chemicals at 20°C, commonly met within industry, including: paraffin, petrol, fuel oils, alcohols, dilute nitric, sulphuric and hydrochloric acids, sugar solutions, oxalic acid, citric acid, caustic soda, salt solutions, cutting oils, mineral oils. Advice given regarding other chemicals. |
| Suitable For | Concrete, sand & cement and metal. | Principle Limitations | Do not apply to wet surfaces. Watco Tack Coat should be used for application to damp surfaces before applying Watco Concrex® Flex. |
| Pack Size | 10kg | | |
| Coverage | Approximately 1.2m ² per 10kg at 5mm thick. | | |
| Shrinkage (on cure) | Negligible. | | |
| Damaged by Frost | No. | | |
| Can be Feather-edged | Yes, around the edge of a repair – full strength at 5mm thick. | | |
| Application Thickness | Up to 50mm for hole filling only. Do not use at more than 15mm for screeding. | | |

ALSO AVAILABLE IN THE CONCREX® RANGE



Concrex® Carbon Fibre



Concrex® Cold Set



Concrex® Deep Fill



Concrex® Acid Strength



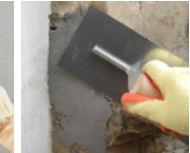
Concrex® Sub Zero



Concrex® Asphalt Repair



Concrex® Vertical



Concrex® Vertical Cold Set



Concrex® Colours



Concrex® Colours Cold Set



Concrex® Deep Fill Cold Set



Concrex® Coving Mortar



Concrex® Fine Filler

PREPARATION & APPLICATION

SURFACE PREPARATION

Surfaces should be clean, dry and free of all loose material. Wire brushing or sweeping is generally sufficient. Watco Bio-D degreaser can be used to remove grease and oil. If the surface is damp it can be primed with Watco Tack Coat.

PRIMING

The resin content of Watco Concrex® Flex is very high. This means that a primer is not usually required when filling holes in concrete floors or resurfacing rough or damaged concrete. Watco Tack Coat adhesive primer is recommended when using Concrex® Flex as a thin section screed over smooth surfaces. It is also recommended when repairing intricate/high impact areas such as broken floor joint edges, and damaged step nosings.

MIXING

Wear protective gloves. The resin and the sand are already pre-blended and is supplied with bottles of curing agent, 4 x 100ml.

The curing agent is added to the sand/resin at point of use, and once mixed the mortar should be used within 15 - 30 minutes depending upon temperature.

If the entire pack of Watco Concrex® Flex cannot be used within 30 minutes, it can be part mixed. To split a pack carefully halve the sand/resin (ideally measured by weight), and use half the number of curing agent bottles. Do not mix inside the plastic bucket. Tip the sand/resin into a mixing tray or on a board.

Shake the bottles of curing agent thoroughly until the liquid is a uniform grey. Form the sand/resin into a mound and leave a small hole in the middle. Empty the curing agent into the hole, ensuring the bottles are completely drained.

Carefully mix the aggregate with the curing agent using a trowel until a smooth mortar is obtained, this will take several minutes. The more thorough the mixing, the 'wetter', smoother and more manageable the mix becomes. Alternatively, you can knead the mixture by hand wearing suitable gloves. It is important to mix thoroughly until you achieve a consistent colour. A 'Cretangle' or suitable open pan mixer can be used to mix large quantities.



1

Empty the bottles of curing agent onto the sand/resin



2

Mix thoroughly using a trowel (or by hand – it's easier)



3

Trowel firmly into the repair



4

Wipe the trowel with white spirit to get a good finish

APPLICATION

Trowel the mortar firmly into the repair and finish with a trowel or float. To get a good smooth finish, regularly wipe the surface of the trowel with a cloth dampened with white spirit.

Watco Concrex® Flex is normally applied at 5mm - 50mm thick, but repairs can be feather-edged if most of the repair is at least 5mm thick. For repairs

deeper than 50mm apply in separate layers allowing 6 - 8 hours between layers, or use Concrex® Deep Fill which can be applied at 15mm - 100mm thick in one layer.

SAFETY

Material Safety Data Sheets are available.



WATCO.CO.UK

Watco UK Limited, Eastgate Court, 195-205 High Street, Guildford, Surrey, GU1 3AW, UK Tel: 01483 418 418 Fax: 01483 428 888 www.watco.co.uk E-mail: sales@watco.co.uk