



SCAN
FOR
MORE
GUIDES



watco[®] GUIDE TO

FLOOR PREPARATION & PAINTING

PART TWO: TYPES OF PAINT AND APPLICATION TIPS

CONTENTS

01 Introduction > 03

02 Types of Floor Paint > 04

Epoxy Resin – Two Part and Water Based > 05

100% Solids Epoxy Resin > 07

Epoxy Resin Solvent Based > 10

Polyaspartic Coating > 12

Polyurethane Single Pack > 15

Acrylic Water Based > 17

Chlorinated Rubber > 19

03 Painting Floors the Expert Way > 21

How to Mix and Paint Two Part Paints > 25

How to Mix and Paint Single Pack Paints > 26

04 Painting Floors in Cold Conditions > 27

05 Further Information > 28

1 | INTRODUCTION

Flooring in commercial premises is subjected to constant wear and tear from vehicles, heavy machinery equipment as well as from regular foot traffic, so you want to be sure that the coating you choose is able to withstand these daily rigours. Get it wrong and you could end up with a bad finish which could lead to more work in the long term as the floor will need to be made good.

Paint technology is constantly evolving but whatever project you're working on, whether it's general maintenance of your warehouse, building a new workshop or sprucing up your logistics centre, you want to be sure that the paint you use is the right paint for the job, and will provide a durable, long-lasting finish.

Now that you understand the ins and outs of preparing your floor for painting after reading the first part of this Essential Guide to Floor Preparation and Painting, we move onto the different types of floor paints. This second part of our guide will help you to select the best paint for your environment and provides some crucial dos and don'ts when it comes to applying floor paints in the cold weather so that you can be sure of a professional finish each time.



2 | TYPES OF FLOOR PAINT

Floor paints can vary vastly in cost and performance. Much of this is down to the technology used in the formulations, but in general, the main categories are:

- Epoxy Resin (Two Part)** 
- Epoxy Resin Water Based** 
- 100% Solids Epoxy Resin** 
- Epoxy Resin Solvent Based** 
- Polyaspartic Coating** 
- Polyurethane Single Pack** 
- Acrylic Water Based** 
- Chlorinated Rubber** 



Which paint you choose for your floor will generally depend upon site conditions and properties such as ease of application, or durability and environment requirements such as suitability for areas where cleanliness and hygiene are important or where anti slip properties are essential.

EPOXY RESIN TWO PART

Two part epoxy resin works by mixing a base resin and a curing agent/hardener at the point of application. These are far superior to single pack paint as they bond to the substrate to form a strong, durable and long-lasting finish that is resistant to chemicals, oils and grease.

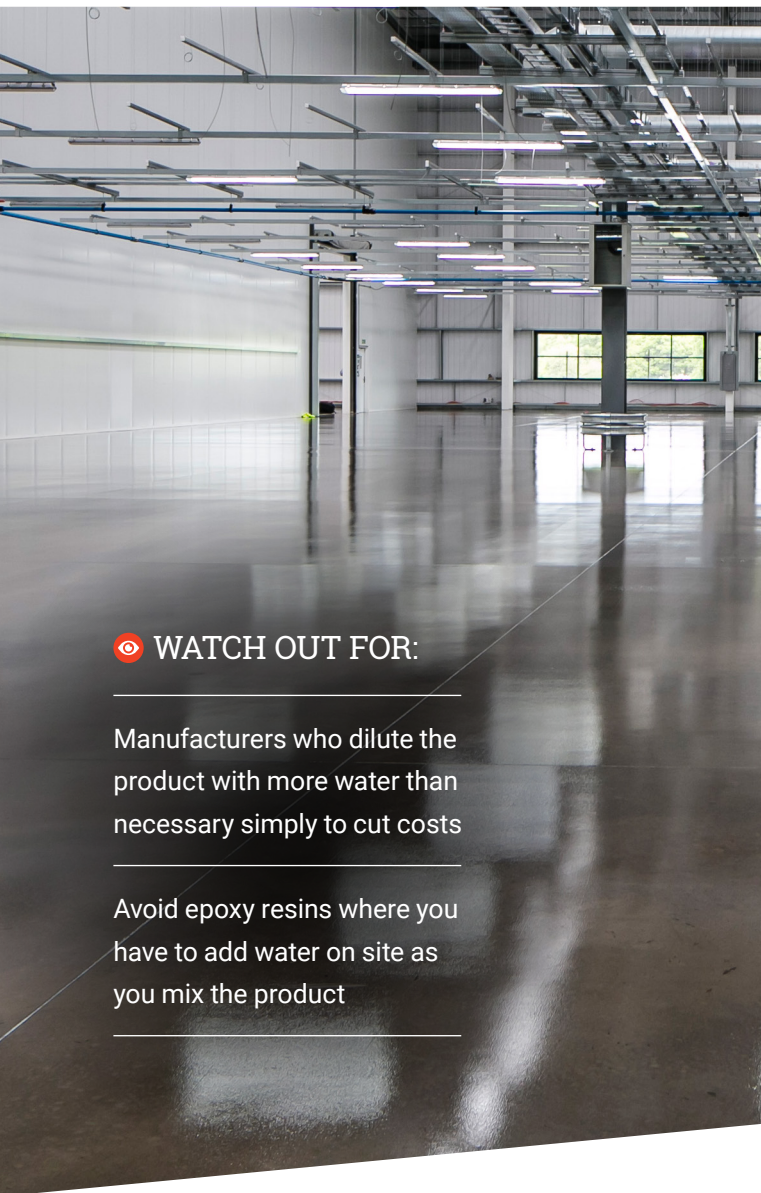
EPOXY RESIN WATER BASED

Two part water based systems vary hugely but it is best to go for a re-enforced, high-performance product that contains the minimum amount of water. The systems are supplied as a tin of resin base and a tin of curing agent. The water in the product acts as a carrier that combines the resin base molecules with the curing agent. Once the two parts are combined, the water evaporates and the coating dries (cures).

Two coats are normally required when using a two part water based epoxy resin, however, if you are overcoating an existing painted floor with a similar colour, one coat should be sufficient. And if you want to keep costs down, you could apply the first coat to aisleways and areas where there is heavy wear, and then a second coat to the entire area.

It is worth bearing in mind that as this product contains water it will shrink slightly as the water evaporates during the curing process. This shrinkage can cause the new paint to 'pull' slightly if you are painting over existing paint. See "How to prepare painted or sealed floors ready for painting" in Part 1 of our Essential Guide to Floor Preparation and Painting for tips on how to prevent this.

Epoxy resins are available in both matt and gloss finish, which one you choose will depend upon where the paint is being used. For example, Epoxy Gloss is ideal to brighten and protect heavy trafficked areas, while Epoxy Matt is popular for surfaces with indentations as the matt finish reduces the light reflection on the surface.



WATCH OUT FOR:

Manufacturers who dilute the product with more water than necessary simply to cut costs

Avoid epoxy resins where you have to add water on site as you mix the product

THE WATCO SOLUTION

Epoxy Resin Two Part and Water Based



Epoxy Matt Coat Range

A tough 2-pack epoxy paint for warehouses, workshops, production areas and showrooms

- Fast curing - apply two coats in a day
- Matt finish is ideal for reducing glare or hiding imperfections in a worn floor
- Thoroughly tested for proven performance

Versions: Original and Hygienic

[Shop now](#)



Epoxy Gloss Coat Range

For warehouses, workshops, production areas and showrooms. A tough epoxy paint glossy finish

- Tough, hard wearing floor finish for heavy wear areas
- Fast curing - apply two coats in a day
- Hygienic formulation is ideal for areas where cleanliness and hygiene are just as important as a long lasting finish

Versions: Original and Hygienic

[Shop now](#)



Powerfloat Sealer Range

Special formulation for smooth, power floated concrete

- Apply direct to power floated or smooth, non-porous concrete
- No need for expensive mechanical floor preparation
- Retains the attractive, smooth floor surface
- Tough, easy clean epoxy resin formulation

Versions: Original Gloss, Original Matt, Anti Slip Gloss and Anti Slip Matt

[Shop now](#)



Safety Coat Range

A two part epoxy with pre-blended aggregate for an even, easy clean, fine anti slip finish

- Perfect for heavy wear, potentially slippery areas
- Easy roller, low odour application
- Tested safe for food production areas
- Impressive results for slip resistance, abrasion, scratch and impact resistance as well as adhesion, hardness and flexibility

Versions: Original, Hygienic, Coarse and Coarse Hygienic

[Shop now](#)



HANDY TIP: You can go over existing paint as there is nothing in a water based formulation that will react with the existing paint.

100% SOLIDS EPOXY RESIN

Two part epoxy resins that contain no water are referred to as either '100% solids' or 'virtually solvent free.' Instead of having water in the product (hence the name 100% solids), there is a separate base resin and curing agent which, when mixed on site, produce a chemical cure that generates heat.

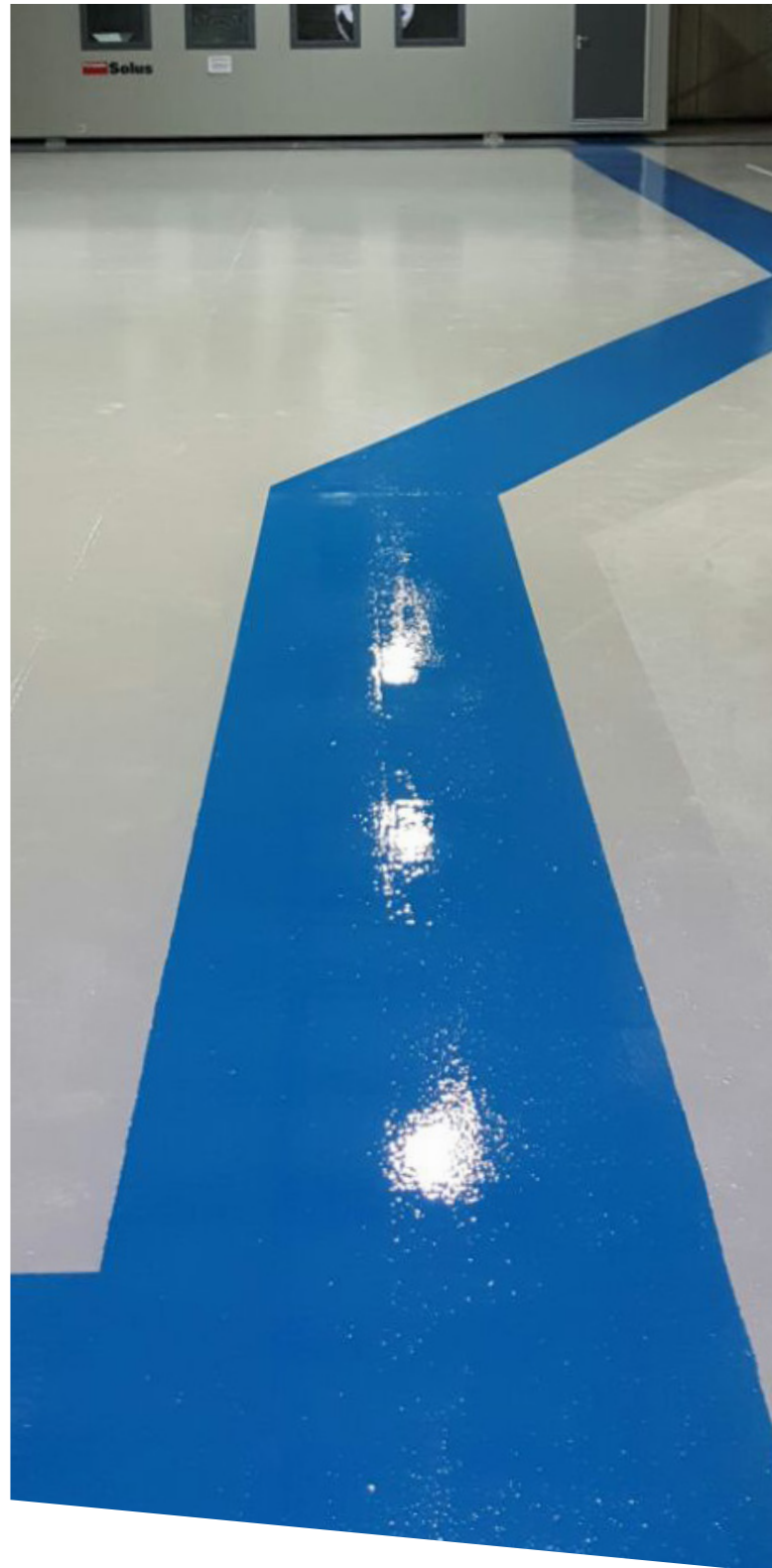
100% solids are the next step up from water based epoxy resins and are harder wearing, have better chemical resistance and last longer. This type of paint technology has additional benefits over water based products in that they can be modified to provide faster drying versions or even versions that will work at lower temperatures.

100% solids achieve a thick, glossy finish with just one coat which saves on time and painting costs as well as allowing an area to be back in use quickly.

🚫 WATCH OUT FOR:

Be careful about what products you use to remove stains as some contain chemicals that can be harmful if inhaled or come into contact with the skin. Always wear the recommended PPE when applying an industrial strength degreaser

Whenever possible, make sure the area you're cleaning is properly ventilated.



THE WATCO SOLUTION

100% Solids Epoxy Resin



Epoxicote High Build Range

Shop now

Extra thick coating for heavy traffic areas in warehouses, garages, receptions, oil & chemical areas

- Heavy duty protection for floors
- Thick, glossy and strong
- Excellent resistance to oil and chemicals
- One coat high build epoxy resin coating – gives excellent wear and abrasion resistance in just one coat

Versions: Original, Anti Slip, Cold Cure, Cold Cure Anti Slip, Rapid and Anti Slip Rapid



Chemi-Coat Range

Shop now

For resistance to aggressive chemicals in heavy traffic areas. Ideal for areas where chemicals are stored or chemical bund areas

- Suitable for walls and floors
- High resistance to aggressive chemicals (Chemi-Coat Acid Strength resists up to 98% sulphuric acid)
- Only one coat required
- Superior performance demonstrated by ISO testing to CE Mark EN1504-2

Versions: Original, Acid Strength, Anti Slip, Cold Cure and Rapid



Resiflow Range

Shop now

A one coat, self-levelling epoxy resin finish that leaves a smooth 'showroom' high gloss surface

- High build 1-2mm thick epoxy resin formula
- Offers the highest levels of durability and finish
- Excellent resistance to general chemicals (Use chemical grade for exceptional resistance to aggressive chemicals)
- Easy clean, low maintenance, long life

Versions: Original and Chemical Grade



Bund Sealer

Shop now

Seals and waterproofs metal or concrete bund areas and pipes. Excellent chemical resistance to petrol, diesel, acids, alkalis and solvents

- Suitable for internal and external use
- Easy to apply, glass flake reinforced formula
- Thick epoxy resin – only one coat needed
- Flexible and waterproof

THE WATCO SOLUTION

100% Solids Epoxy Resin



Safety Grip Range

For steps, ramps and floors, in wet or oily areas. Coarse anti slip finish to reduce accidents

- Heavy duty with excellent chemical resistance
- Easy one coat application for concrete, metal or wood
- Our best selling coating for over 40 years
- Designed to improve safety both inside and out
- Very good chemical resistance – tested with the most common chemicals

Versions: Original, Cold Cure and Rapid, Flex

Shop now



New Concrete Primer

Allows brand new concrete to be painted quickly

- Suppresses construction moisture which enables newly laid concrete floors to be painted and put into use quickly
- Only one coat normally needed for a completely sealed surface
- Can be applied to damp surfaces – can also be used with underfloor heating systems
- Overcoat in just 16 hours

Shop now



4 Hour Epoxy Primer

A fast drying primer for bare, porous or open textured surfaces

- Virtually solvent free
- Reduces suction on porous floors
- Binds weak and friable surfaces
- Ensures maximum long term adhesion of the floor coating
- Prime and coat in the same day cutting labour costs and waiting time
- Prevents bubbles forming in epoxy top coats

Shop now



HANDY TIP: As these products don't contain water, they can also be applied to metal, floor channel gratings, access covers and ramps without causing rusting or the need for a primer. When used with a primer, such as our Galvaprime, they can also be applied to galvanised metal.

EPOXY RESIN SOLVENT BASED

Our solvent based epoxy resin is similar to the two part water based epoxy in that there is a base resin and a curing agent hardener which are mixed together at the point of use. The difference with the solvent based product is that it uses solvent instead of water to link the resin and hardener.

Solvent based epoxy resin is ideal for garages and car parks as it contains a slip resistant additive, is more tolerant to contaminants such as petroleum, is extremely hard wearing and has excellent resistance to tyre marks.

🚫 WATCH OUT FOR:

We recommend limiting the use of these formulations to exterior areas as the formulation uses solvent instead of water which means it can smell



THE WATCO SOLUTION

Epoxy Resin Solvent Based



Heavy Duty Anti Slip Traffic Paint

For high traffic exterior surfaces including walkways, car parks, vehicle areas and hazard zones

- Pre-blended hard aluminium oxide grit, which offers excellent slip and abrasion resistance
- Suitable for both concrete asphalt surfaces
- Only one coat usually required
- High pigment level offers excellent hiding power
- Excellent chemical resistance

[Shop now](#)



HANDY TIP: The solvent does not rely on a warm drying environment so it will still harden in humid, foggy or damp conditions, making it suitable for outdoor use.

POLYASPARTIC COATING

Polyaspartic is a relatively new addition to paint technology, it allows paints to be formulated to do things that were not possible before, such as enabling paints and mortars to dry at minus 20°C and floor paint to dry in only 2 hours.

Polyaspartic coatings are far superior to epoxy resins or polyurethanes and offer greater performance benefits. Although the film is thinner, the coating is significantly harder and offers rapid, cold curing and exceptional resistance to UV fading. They also have outstanding scratch and chemical resistance. Their resistance to UV and ability to dry quickly in very low temperatures makes these coatings the ideal choice for application in harsh environments.

Application is quick. As the products dry rapidly you can easily apply two coats in a single day, reducing the downtime of your area or facility. Once the base resin and curing agent have been mixed together, the chemical reaction is fast. So, make sure you don't mix too much of the product as it could harden before you finish applying it.

🎯 WATCH OUT FOR:

Specialist raw materials used to manufacture these products tend to be used to address specific applications requirements, meaning they can be more expensive. Prices will reduce in time as their use increases.

Make sure you are fully prepared before applying the coating as it dries rapidly.



THE WATCO SOLUTION

Polyaspartic Coating



Fastcoat Range

Fast drying to reduce warehouse downtime - apply two coats in one day

- Extremely strong – easily copes with very heavy traffic
- Superior abrasion and scratch resistance
- Can be applied at low temperatures as low as -10°C and as high as 25°C
- Excellent resistance to UV and weathering

Versions: Original and Anti Slip

Shop now



Cold Set Coating

For cold areas such as walk-in fridges, cold stores and loading bays. Highly wear resistant

- Allows essential maintenance during the winter
- Ideal for use in chiller rooms
- Excellent abrasion and UV resistance
- Fast curing – ready for heavy traffic in just 16 hours
- Extremely strong – easily copes with forklift traffic

Shop now



Safety Coat Cold Cure

Fine textured high performance coating for cold stores, walk-in fridges. Dries at -10°C

- Can be applied at temperatures as low as -10°C and as high as 25°C
- Excellent resistance to UV and weathering making it a versatile, all year round coating
- Superior performance demonstrated by ISO testing to CE Mark EN1504-2
- The finely textured particles are spherical; this makes it easier to keep clean compared to other anti slip coatings

Shop now



Food Safe Coating

Specialist polyaspartic resin coating ideal for use in food storage or preparation environments

- Meets requirements for EN14/3 (Food taint test)
- Rapid drying - 2 coats in a day
- Can be applied at a temperature range of minus 10-30°C
- Excellent abrasion and UV resistance
- Use Safety Coat Food Safe for an anti slip surface and Food Safe Coating for a smooth finish

Shop now

THE WATCO SOLUTION

Polyaspartic Coating



Toughline

Superior quality line marking paint for cold or exterior applications

- Perfect line marker for unheated warehouses, walk in fridges, cold stores and loading bays
- Particularly useful for exterior applications as it resists chalking, fading, weathering and UV discolouration
- Flexible formulation
- Excellent chemical resistance

[Shop now](#)



Protecta-Coat Range

Clear protective coating for painted or bare concrete floors

- Protects coloured and decorative coatings from heavy wear and tear
- Can be applied at temperatures ranging from -10°C to +30°C
- Excellent chemical resistance, thus enhancing workplace safety
- Suitable for internal and external use

Versions: Original and Anti Slip

[Shop now](#)



HANDY TIP: These products can be applied to concrete and metal without a primer to produce an exceptionally tough film.

POLYURETHANE SINGLE PACK

Single pack polyurethane products are ideal for general industrial use, such as for storage areas, as you can just use part of the product if you want to, and then store the rest for use later.

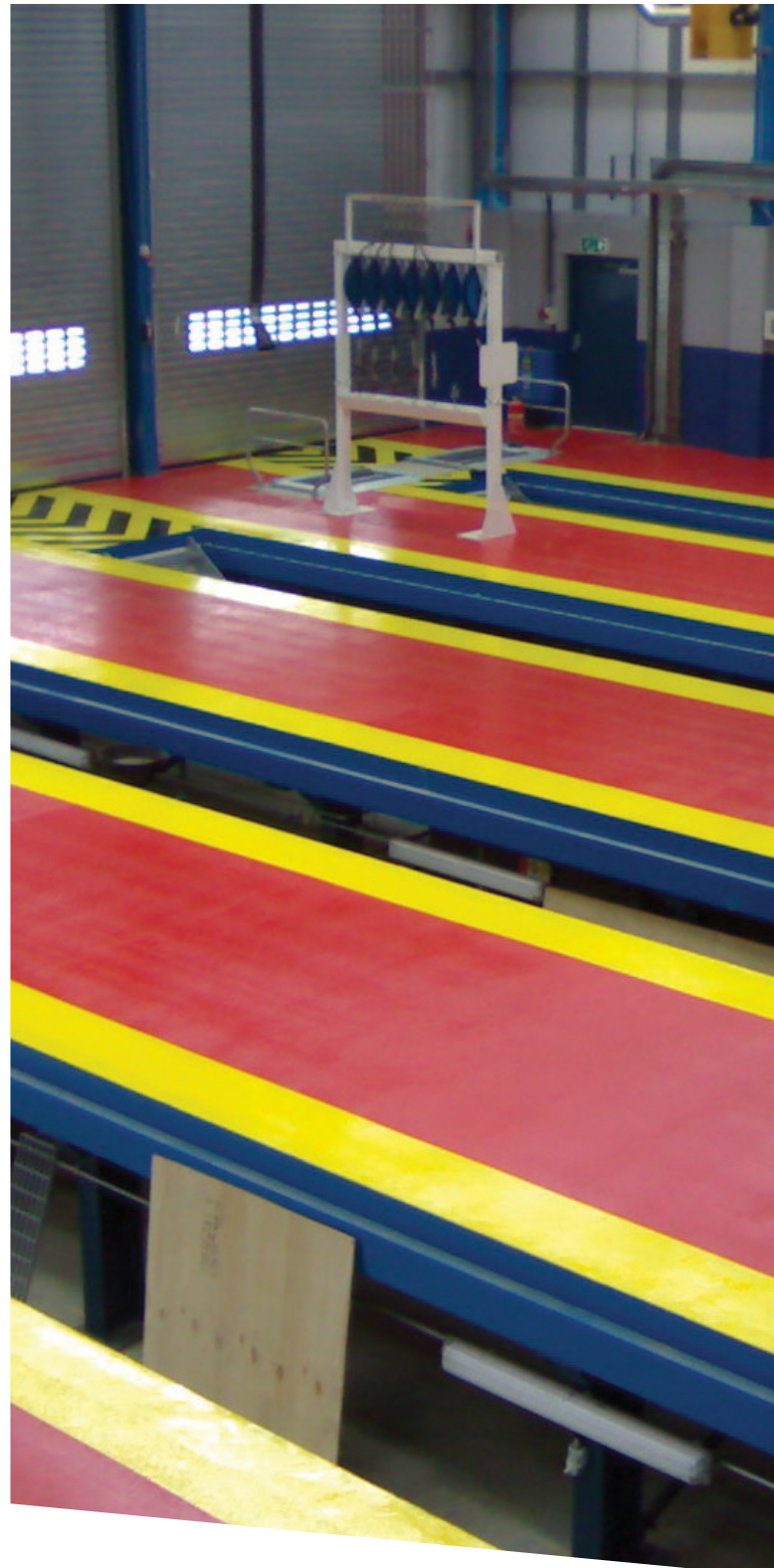
When painting on new concrete, make sure it is etched using an acid based preparatory agent to neutralise the alkalinity in the new concrete surface, as single pack polyurethane paints can be affected by alkalinity. See “How to prepare new concrete floors ready for painting” in Part 1 of our Essential Guide to Floor Preparation and Painting for tips on how to prepare the floor before painting.

Our Watco Concrete Floor Paint is our most popular single pack polyurethane based floor paint and we believe it is the most durable single pack paint available today. The formulation uses the hardest wearing single pack alkyd base resin that we can buy.

Just two coats of any of the paints in our single pack range including matt, gloss, smooth and anti slip will produce excellent results and coverage.

🚫 WATCH OUT FOR:

Single pack products are not suitable for areas where vehicles are parked for any length of time as tyres can ‘pick’ at the paint



THE WATCO SOLUTION

Polyurethane Single Pack



Concrete Floor Paint

Easy to use pre-mixed for light traffic areas in warehouses, garages and other concrete floors

- Professional quality, single pack polyurethane coating
- Transforms and dustproofs drab, stained concrete
- Ideal for identifying production and storage areas and traffic aisles
- Easy to use and easy to keep clean
- Available in 190 RAL colours

Versions: Original, Matt and Anti Slip

[Shop now](#)



HANDY TIP: You can choose from 190 RAL colours with our Spectrum range making it a great choice for showrooms, retail areas, leisure facilities and play areas.

ACRYLIC WATER BASED



Our acrylic paint formulations are different as they feature water based acrylic paint combined with durable resin. This helps to produce an extremely tough paint film that will not dissolve in water puddles, as some water based paints are prone to.

The virtually odourless formulation is easy to apply and provides a good covering in just one coat. Our clear product formulations use micronized acrylic technology which allows the product to be poured onto bare concrete and pushed around with a soft broom until it has been absorbed. The water acts as a carrier and takes the micronized acrylic into the fabric of the concrete before evaporating. The acrylic then sets within the concrete, making it too hard to produce dust.

👁️ WATCH OUT FOR:

Dry and reasonably warm conditions are required for the water based product to dry

THE WATCO SOLUTION

Acrylic Water Based



Asphalt Paint

For marking out parking bays, pedestrian walkways, hazardous areas, tennis courts

- Flexible, water based acrylic – quick and easy to use
- High pigment level offers excellent hiding power
- Colours, protects and waterproofs in only one coat
- Breathable, virtually solvent free and odourless – safe to use inside as well as outside

[Shop now](#)



Asphalt Paint Anti Slip

External anti slip paint for public walkways, playgrounds, tennis courts, private driveways

- Anti slip, flexible water based acrylic
- Fine pre-blended grip offers a good degree of slip resistance for pedestrians
- Perfect for light to medium traffic areas
- Excellent UV resistance to protect against fading

[Shop now](#)



Trafficline

A versatile line marking paint for inside and out

- Use on asphalt, tarmac, porous concrete, metals and more
- One coat is all you need
- Can be applied to damp surfaces
- Excellent resistance to UV and weathering

[Shop now](#)



Universal Sealer Dustproofer

Hardens and dustproofs weak, dusty concrete

- Suitable for a wide range of porous surfaces – use on floors and walls, in factories, warehouses, machine shops and more
- Dustproofs and strengthens in one coat
- Highly penetrating micronized acrylic
- Rapid application using a broom

[Shop now](#)



HANDY TIP: As the products are water based, they can be applied to surfaces that are still damp after cleaning.

CHLORINATED RUBBER

Chlorinated rubber has been around for a long time and works exceptionally well for exterior areas. One of the main benefits of this product formulation is that it is extremely tough, making it ideal for exterior use, such as line marking or car park painting.

Available as a single pack product, our paint is quick drying and has excellent resistance to chemicals including fuel spills and to cracking or movement on asphalt or concrete. Application is easy, once the surface has been cleaned, is dry and free from loose material the paint can simply be applied by brush or roller and will be showerproof in just 1 hour.

⦿ WATCH OUT FOR:

As with most solvent based coatings, we recommend that application is restricted to external use or very well ventilated areas such as loading bays



THE WATCO SOLUTION

Chlorinated Rubber



Asphalt Paint Rapid

A rapid drying road paint suitable for concrete and asphalt

- Suitable for coating exterior concrete and asphalt
- Easy to apply by brush or roller and offers exceptional wear resistance in heavy traffic areas
- Showerproof in just one hour
- Can be applied at 5°C
- Only one coat takes heavy traffic

[Shop now](#)



HANDY TIP: Chlorinated rubber is very tough and lends itself well to exterior line marking and car park painting.

3 | PAINTING FLOORS THE EXPERT WAY

Now that you understand how to prepare a floor properly for painting and what paint options are available, it's time to bring your floor back to life.

Before starting, you need to give the floor a thorough clean to get rid of any dirt, dust or contaminants that may be present and prepare it properly ready for painting. Please see Part 1 of our Essential Guide for details on how to prep a floor dependent upon its condition as this will determine what cleaner or etcher you require. For example, Watco Etch & Clean should be used on new concrete floors while Watco Bio D is recommended if you need to remove dirt from painted floors.

Once the floor has been washed and prepped properly, you can start to apply the paint.



	SUITABLE FOR					CAN BE APPLIED TO					
	Exterior use	Interior use	Pedestrian/ Light wheeled traffic	Medium traffic	Heavy forklift traffic	Bare concrete	Painted concrete	Wood	Most metals*	Sand and cement screed*	Old asphalt
FLOOR SEALANT											
New Concrete Primer	•	•	•	•	•	•				•	
4 Hour Epoxy Primer	•	•	•	•	•	•				•	
Concrete Sealer Water Based	•	•		•		•				•	
Protecta Coat	•	•			•	•	•	•	•	•	
Protecta Coat Anti Slip	•	•			•	•	•	•	•	•	
Universal Sealer Dustproofer	•	•		•		•				•	
GENERAL COATINGS											
Concrete Floor Paint		•		•		•	•	•	•	•	•
Epoxicote High Build		•			•	•	•	•	•	•	
Epoxy Gloss Coat		•			•	•	•	•		•	•
Epoxy Matt Coat		•			•	•	•	•		•	•
Asphalt Paint	•				•	•				•	•
Asphalt Paint Rapid	•				•	•		•	•	•	•
Roadmarker	•				•	•	•				•
Trafficline	•	•		•		•			•		•
Epoxyline	•	•	•			•	•				
ANTI SLIP COATINGS											
Concrete Floor Paint Anti Slip		•		•		•	•	•	•	•	•
Asphalt Paint Anti Slip	•	•		•		•	•	•		•	•
Epoxicote High Build Anti Slip		•			•	•	•	•	•	•	
Safety Coat		•			•	•	•	•		•	•
Safety Grip	•	•			•	•	•	•	•	•	•

	SUITABLE FOR					CAN BE APPLIED TO					
	Exterior use	Interior use	Pedestrian/ Light wheeled traffic	Medium traffic	Heavy forklift traffic	Bare concrete	Painted concrete	Wood	Most metals*	Sand and cement screed*	Old asphalt
CHEMICAL RESISTANT											
Chemi-Coat		●			●	●	●	●	●	●	●
Chemi-Coat Acid Strength		●			●	●	●	●	●	●	●
Chemi-Coat Acid Strength		●			●	●	●	●	●	●	
DECORATIVE COATINGS											
Resiflow Supergloss		●			●	●	●		●	●	
COLD CURE COATINGS											
Chemi-Coat Cold Cure		●			●	●	●	●	●	●	●
Epoxicote High Build Cold Cure		●			●	●	●	●	●	●	
Safety Coat Cold Cure	●	●	●		●	●	●	●	●	●	●
Toughline	●	●			●	●		●	●	●	●

	SUITABLE FOR					CAN BE APPLIED TO					
	Exterior use	Interior use	Pedestrian/ Light wheeled traffic	Medium traffic	Heavy forklift traffic	Bare concrete	Painted concrete	Wood	Most metals*	Sand and cement screed*	Old asphalt
SPECIALIST APPLICATIONS											
Powerfloat Sealer	●	●	●	●	●	●	●	●	●	●	●
Powerfloat Sealer Anti Slip	●	●	●	●	●	●	●	●	●	●	●
Bund Sealer	●	●	●	●	●	●	●	●	●	●	●
Food Safe Coating	●	●	●	●	●	●	●	●	●	●	●
Safety Coat Food Safe	●	●	●	●	●	●	●	●	●	●	●
Fastcoat	●	●	●	●	●	●	●	●	●	●	●
Fastcoat Anti Slip	●	●	●	●	●	●	●	●	●	●	●
Cold Set Coating	●	●	●	●	●	●	●	●	●	●	●

HOW TO MIX AND PAINT TWO PART PAINTS



Whether you're using an epoxy resin or polyaspartic paint, you should start by mixing the two parts together by pouring the contents from the floor paint resin tin into the larger tin which contains the hardener.

Thoroughly mix the two parts together until you have an even colour and consistency. Pour the mixed paint into a plastic paint tray and then cut along the edges of your floor using a suitable brush. We recommend that you tackle the main floor area in sections using a medium pile roller and a telescopic handle for those hard-to-reach corners.

Once complete, be patient. You need to make sure to allow the right amount of drying time before putting the area back into use, so always check what it says on the tin.

👁️ WATCH OUT FOR:

When mixing a two part epoxy resin or polyaspartic make sure you don't over stir or thin the paint

Make sure you don't exceed the recommended coverage for the product. If you do you won't be able to achieve an even finish to the right thickness.

Polyaspartic sets quicker than epoxy coatings so only pour out the amount you can cut in and apply within minutes



HANDY TIP: Tackle the floor in sections, starting at the furthest corner so you don't get blocked in as you apply the paint.

HOW TO MIX AND PAINT SINGLE PACK PAINTS

Our single pack water based, acrylic and polyurethane paints, such as Watco Heavy Duty Asphalt Paint or Watco Concrete Floor Paint, are quick and easy to apply.

Before applying, stir the paint thoroughly to ensure an even distribution of colour and guarantee the right consistency.

Use a brush to cut into the edges and then a roller to apply the paint to the main floor area, making sure you work well into the surface. If a second coat is required it can be applied once the first coat is dry (check the tin for drying times) and should be applied within 5 days. Avoid washing the surface for 7 days after the paint has been applied.

⦿ WATCH OUT FOR:

You need to make sure you don't apply the paint too thickly and do not thin the paint under any circumstances as this will compromise the formulation and therefore affect its coverage and performance benefits



HANDY TIP: If you're unable to apply the second coat within 5 days, you can lightly abrade the first coat before the second one is applied.



4 | PAINTING FLOORS IN COLD CONDITIONS

Life is never simple which means sometimes you will need to carry out essential refurbishment and maintenance of your floors in colder months or in areas that are difficult to heat such as open loading bays or chiller rooms.

You could use temporary space heaters to warm the room up, but in cold areas, these are of little use as they merely warm the air, not the floor. If a paint requires a temperature of between 10°C -15°C to dry, you may be able to raise the air temperature to this level, but the floor will still be too cold.

This can cause a raft of problems depending on what paint formulation you want to use. For example, water based epoxy resins will bloom if they are part cured, while glossy finishes will turn matt. This means that if an area is warmer at the back of a building or room than it is closer to an opening such as a roller shutter door, the floor coating will be glossier at the back and fade to matt nearer to the door.

👁️ WATCH OUT FOR:

100% solids epoxy resins will only part cure in cold conditions. They may even lose residual tack and the floor might appear dry, but they will not have chemically cured

Part cured epoxy will pick up scratches, stains and tyre marks

Part cured epoxy resins will not bond correctly to a subfloor when painting in cold conditions and can peel off when the floor is put to use or stick to tyres

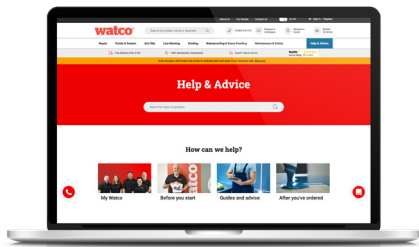
During the curing process, water based epoxy resins release water. In cold conditions the water won't be able to evaporate which means the floor will not be able to dry



HANDY TIP:

- Our Watco Specialist section is a range of products that will perform if applied at temperatures down to -10°C as well as at normal temperatures
- As pioneers in the use of polyaspartic resins in Europe we have developed a new type of paint technology that includes special characteristics such as allowing paint to dry correctly at -10°C
- For less severe conditions we have formulated epoxy resin products that will cure at 5°C

5 | FURTHER INFORMATION



VISIT OUR WEBSITE

So now you understand the different types of floor paints and where they should be applied. If you want further information on floor preparation, please visit the "Help & Advice" section on our website

SPEAK TO AN EXPERT

Contact our expert advisors using the details below:

Email: sales@watco.ie
Telephone: 01 6725 180
Live Chat: watco.ie

[Go to website](#)

[Contact us](#)